



VA.3.60/..

- replaceable flexible insert
- Non-PVC

FEATURES

expansion insert can be replaced anytime, abrasion, weather and temperature resistant (-40°C bis +120°C), resistant to salt and waste-water (alcalics, microbes, bacteria), punched bearing legs guarantee best connection to the subgrade/covering.

APPLICATIONS

shopping centres, railway stations, airports, exhibition halls, residential, office and administration buildings

MATERIAL

high-grade steel V2A, synthetic rubber flexible insert (EPDM)

COVERING TYPES

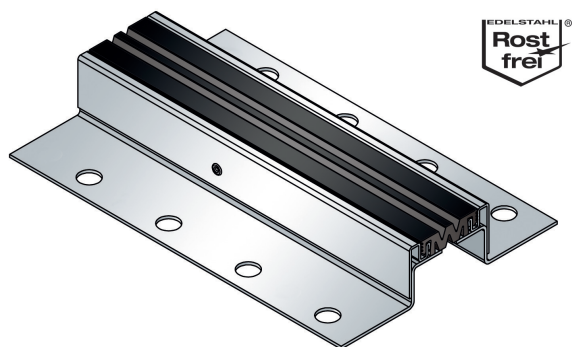
coating, screed, natural and stone slabs

FORMED PARTS

corner piece, T piece, cross piece, transition floor to wall

NOTES

In case of mastic asphalt, please request a technical consultation.

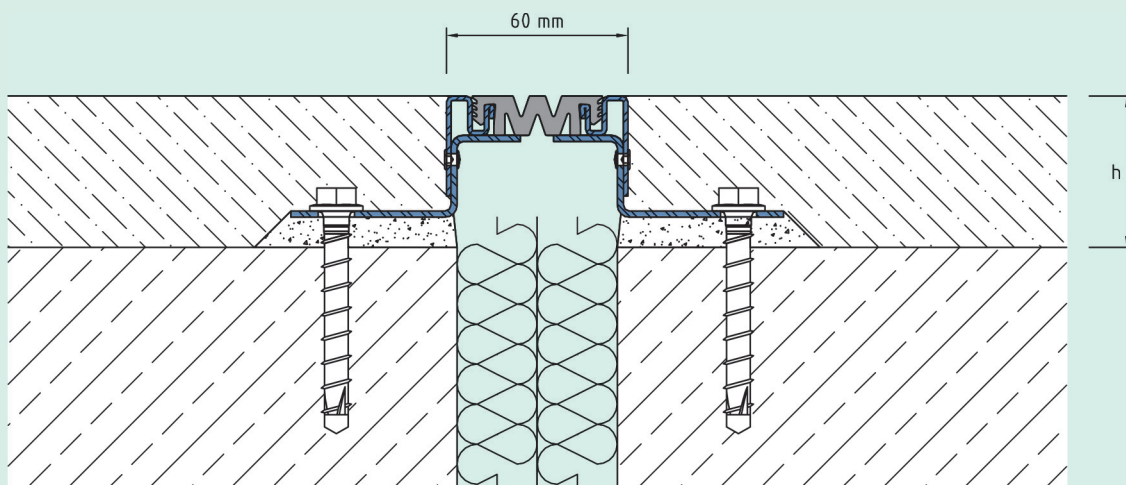


Technical data

Movement horizontal:	16 mm (±8 mm)
Movement vertical:	12 mm (±6 mm)
Visible width:	60 mm
Maximal joint width:	55 mm
Load rating:	wheel load 700 kg up to Ø 150 mm, B = 100 mm
Supply length:	3 mtr
Color of flexible insert:	black

Designs

Article No.	Profile height (h)	Recess(WxD)
VA.3.60/30	30 mm	210 x 40 mm
VA.3.60/40	40 mm	210 x 50 mm
VA.3.60/50	50 mm	210 x 60 mm
VA.3.60/60	60 mm	210 x 70 mm
VA.3.60/80	80 mm	210 x 90 mm



VA.3.60

Subject to technical change without notice.