



VA.1.90/..

- replaceable expansion insert
- non-PVC
- stable aluminum supports
- stainless steel profile edge

FEATURES

expansion insert can be replaced anytime, abrasion-, weather- and temperature-resistant (-40°C to +120°C), perforated bearing legs guarantee the best connection to the substrate/covering

APPLICATIONS

residential, office and administration buildings

MATERIAL

aluminium support with stainless steel profile edge, EPDM expansion insert

COVERING TYPES

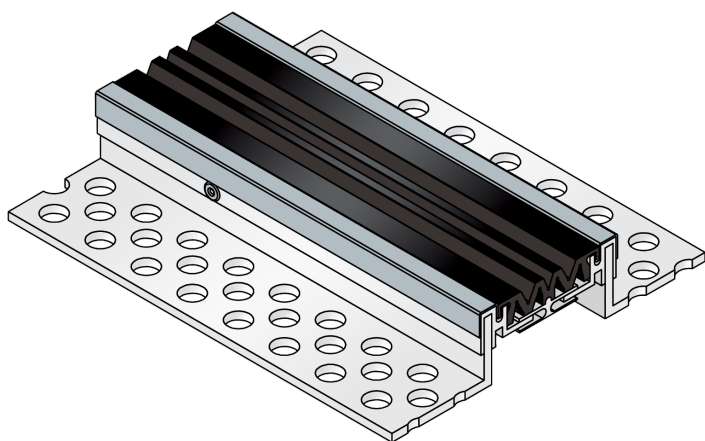
screed, natural and stone slabs

FORMED PARTS

corner piece, T-piece, cross piece

NOTES

For mastic asphalt, please ask for technical advice.



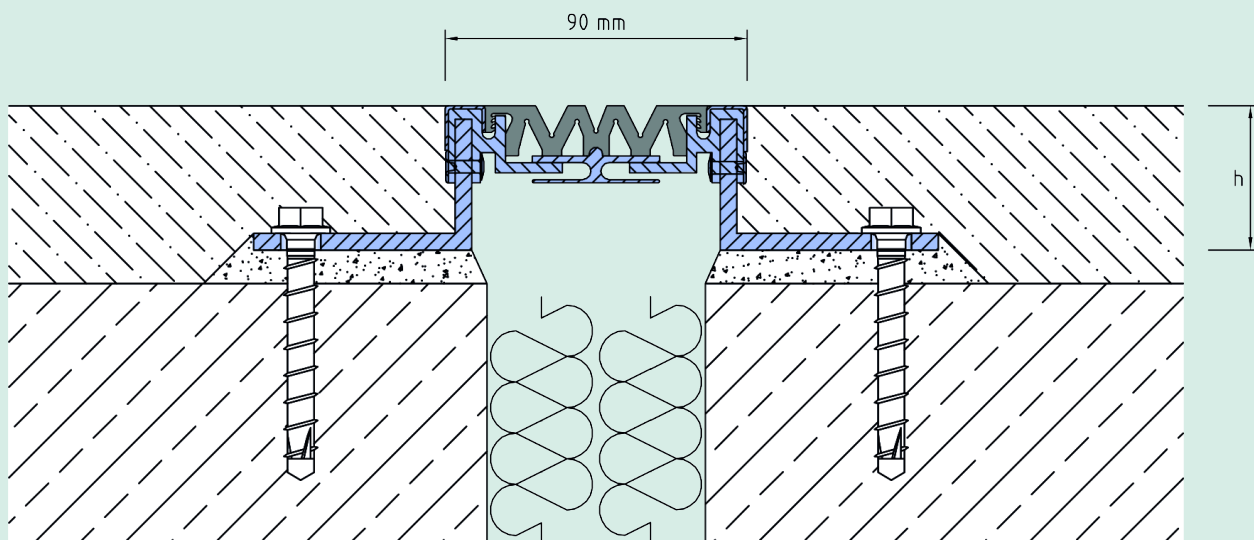
TECHNICAL DATA

Movement horizontal:	26 mm (±13 mm)
Movement vertical:	16 mm (±8 mm)
Visible width:	90 mm
Maximal joint width:	65 mm
Load rating:	wheel load 700 kg up to Ø 150 mm, B = 100 mm
Supply length:	3 mtr
Color of expansion insert:	schwarz oder grau

DESIGNS

ARTICLE NO.	PROFILE HEIGHT ^(h)	RECESS ^(BxT)
VA.1.90/34	34 mm	260 x 44 mm
VA.1.90/44	44 mm	260 x 54 mm
VA.1.90/64	64 mm	260 x 74 mm
VA.1.90/84	84 mm	260 x 94 mm
VA.1.90/104	104 mm	260 x 114 mm

Special heights on request.



VA.1.90

Subject to technical change without notice.