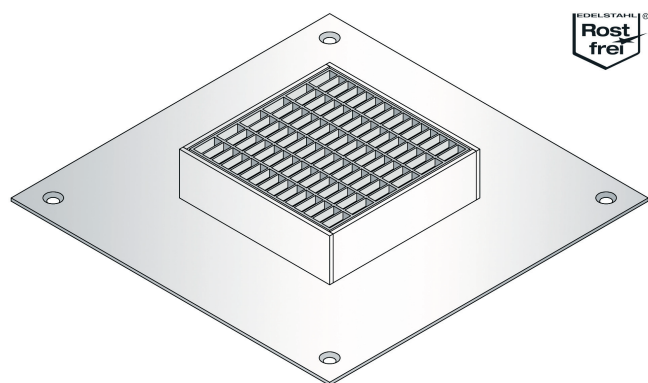




ALK.2.200/..

- high load-bearing capacity
- with adhering flange



FEATURES

resistant to heavy loads, permanently tight, corrosion-resistant, high flexibility (variable heights and widths), mesh size of the steel grating in 30x10 mm or 30x30 mm possible, grate adjustment inclusive, drain pipe DN100, length 200 mm

APPLICATIONS

outdoor, multi-storey and underground park decks, all industrial applications, shopping centres, railway stations, airports, exhibition halls

MATERIAL

hot-dip galvanised steel, high-grade steel V4A (on request)

COVERING TYPES

asphalt, screed

TRAFFICABILITY

truck (on request)

NOTES

drainage slots are possible (on request).

For stainless steel gutters, the general cleaning and care instructions must be observed (see also www.buprofile.de - Download section).

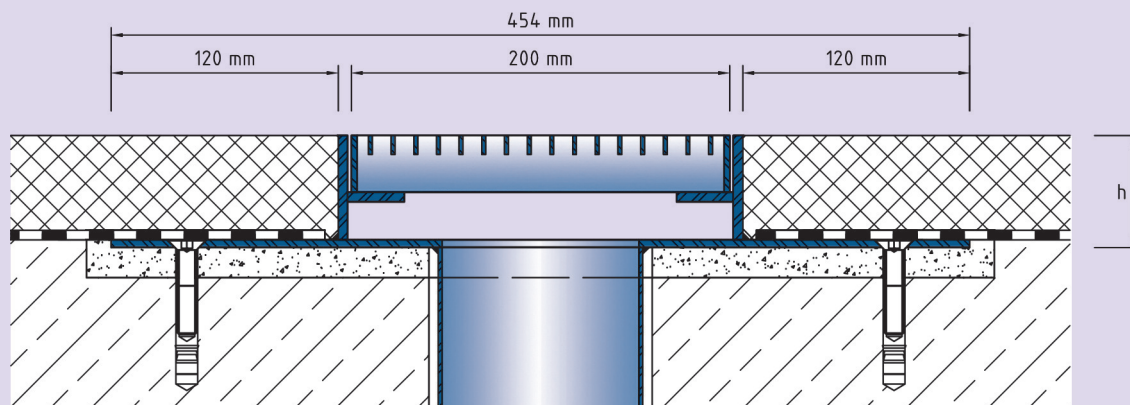
Our engineers and technicians can be of assistance during installation on request.

Technical data

Material thickness bonding flange: 4 mm
Material thickness vertical base: 5 mm
Steel grating width: 200 mm

Designs

Article No.	Channel height (h)	Recess (WxD)
ALK.2.200/59	59 mm	480 x 20 mm
ALK.2.200/79	79 mm	480 x 20 mm
Special heights on request.		



ALK.2.200

Subject to technical change without notice.