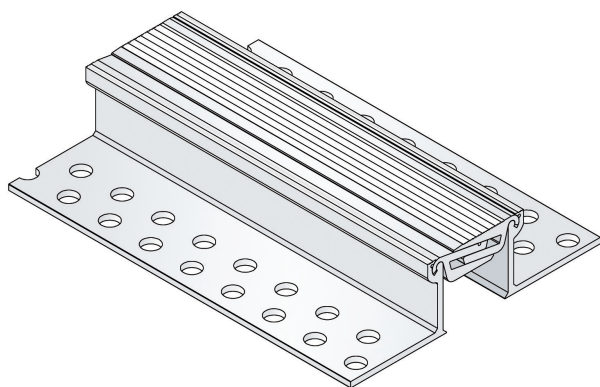




## AL.5.70/..

- for medium loads
- three-dimensional absorption of movements
- anti-slip surface
- solid full-aluminium structure



### FEATURES

resistant to heavy loads, trafficable by fork-lift trucks, punched bearing legs guarantee best connection to the subgrade/covering.

### APPLICATIONS

all industrial applications, shopping centres, railway stations, airports, exhibition halls

### MATERIAL

aluminium

### COVERING TYPES

coating, concrete, screed, industrial covering, natural and stone slabs

### TRAFFICABILITY

industrial trucks (lifting trucks, fork-lifts etc.), passenger car, trucks

### FORMED PARTS

corner piece, T piece, cross piece, transition floor to wall

### NOTES

We recommend that the customer applies grout between profile and covering so as to avoid typical hairline cracks.

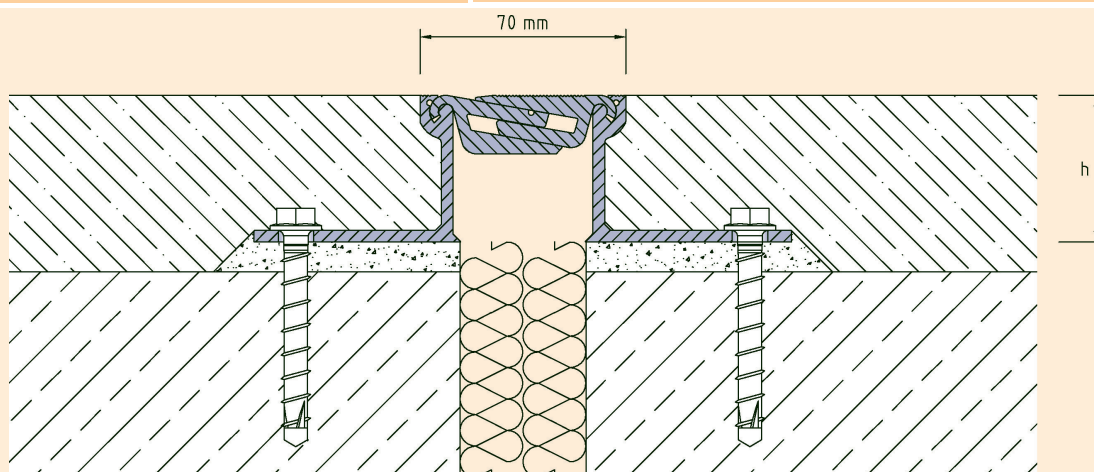
From a Profile height of 200 mm gusset plates are fixed on the sides to reinforce the Profile.

### Technical data

Movement horizontal:	20 mm ( $\pm 10$ mm)
Movement vertical:	10 mm ( $\pm 5$ mm)
Visible width:	70 mm
Maximal joint width:	50 mm
Load rating:	wheel load 1500 kg up to $\varnothing$ 150 mm, B = 100 mm
Load rating trucks:	600 kN (DIN 1072)
Load rating forklifts:	100 kN (DIN 1055-3)
Supply length:	3 mtr

### Designs

Article No.	Profile height (h)	Recess (WxD)
AL.5.70/25	25 mm	230 x 35 mm
AL.5.70/37	37 mm	230 x 47 mm
AL.5.70/50	50 mm	230 x 60 mm
AL.5.70/65	65 mm	230 x 75 mm
AL.5.70/80	80 mm	230 x 90 mm
AL.5.70/100	100 mm	260 x 110 mm
AL.5.70/120	120 mm	260 x 130 mm
Special heights on request.		



AL.5.70

Subject to technical change without notice.